

SVGA and old Legacy Signals

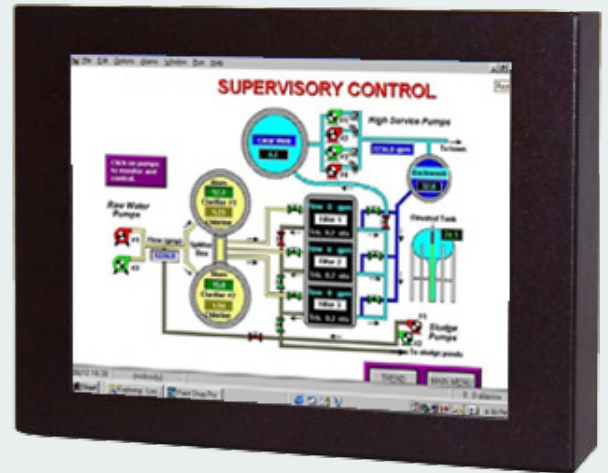
The 29LS103E71UN/2 series of LCD chassis monitors has been designed for industrial applications in the Control field and other users that require a compact VGA monitor with a small footprint and a high brightness display with good viewing angles. The rugged, metal construction of the monitor ensures exceptional stability, especially important when touchscreen operation is necessary. Adjustable top and bottom fixing brackets allow easy mounting of the chassis to a front panel.

The KME A/D board has been designed to accept a wide range of signal timings from 15kHz up to VGA standard, including CGA & EGA legacy signals. Set-up controls for fine tuning of the display are located at the rear of the monitor. Once set, no further adjustments should be required, and the last setting is stored in memory.

Features

- High Brightness/High Contrast TFT panel
- 15 to 60kHz Horizontal Scanning range
- 40 to 100 Hz Vertical Scanning range
- Programmable for non-standard Legacy signals
- Rugged Metal Construction with Good Stability
- Optional Touchscreen Integration

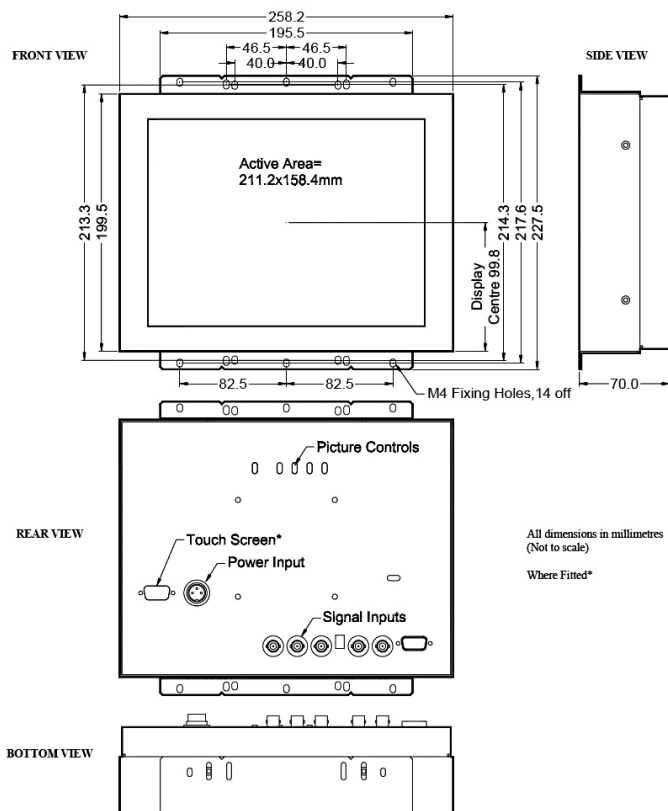
10.4" CRT Replacement LCD Chassis Head 29LS103E71UN-2



Specifications: see next page

Specifications		
TFT Characteristics	Type	AM Colour TFT
	Max. Resolution	800 x 600 pixels
	Active Display Area	211.2 x 158.4 mm
	Response Time	25ms average, typical
	Contrast Ratio	500:1 typical
	Brightness	400 cd/m ² typical
	Viewing angles (at CR>10)	120°H, 100°V
	Backlight life	50,000 hrs typical
	Nr. of colours	256K
	Clock rate	80MHz max
Sync. Type/Level	Separate H&V (+/-ve) TTL	or Composite (-ve) TTL or Sync-on-Green (-ve) 0.3V
Signal Sync	Analog RGB 0.7-1.0Vp-p OR TTL RGB>2.75Vp-p (via special TTL accessory cable)	
Synchronisation Range	Horizontal scan	15-60kHz
	Vertical scan	40-100Hz
Multiscan Support	800 x 600 SVGA 640 x 480 VGA	+ pre-programmed timings in 15-30kHz range
Power supply	12.0VDC	
Power consumption	30W (Max)	
Environmental	Storage temp.	-20°C to 60°C
	Operating temp.	0°C to 50°C
Dimensions	Monitor	258 x 195 x 70 mm
	Weight	2 kg approx
Input	5 x BNC 75Ω, 15-pin HD Female	
Housing	Painted aluminium	
User controls	Rear mounted	
On screen buttons	Brightness, Contrast, H/V Position & Size, Frequency, Frequency Fine	
Part numbers		
Model	29LS103E71UN/2	

Specifications are subject to change without notice.



• Monitors

- Desktop Monitors
- Large screen Monitors
- Custom-made Monitors
- 19" Rack Mount Monitors
- Rear Mount Monitors
- Monitors for Panel Mount
- Monitors for VESA Mount
- Kiosks
- Accessories

• Monitors – Specific applications

- Stainless Steel Monitors
- Car Displays
- Marine Monitors
- Military Monitors
- Replacement Monitors
- Train Monitors

• Panel PC's

- High Performance Systems
- Custom made Panel PC's
- Low Power Systems
- Extreme environments

• Pointing devices

- Accessories
- Touchpads
- Trackballs
- Trackball Modules
- Joysticks
- Custom made Pointing Devices

• Keyboards

- Desktop Keyboards with or without pointer
- Built-in Keyboards with or without pointer
- Cables & Connectors
- Custom made Keyboards



Mulder-Hardenberg, est. 1927, is the answer to professional demands in the domain of electronic related environments. We don't just sell products. We use our multidiscipline knowledge to provide the best possible solution, designed to your specific interest.

Contact details:

The Netherlands
Mulder-Hardenberg B.V.
Westerhoutpark 1a
2012 JL Haarlem
Tel.: +31 23 531 91 84
info.nl@m-h.biz

Belgium, France, Luxemburg
Mulder-Hardenberg N.V.
Hoge Weg 129
B-2940 Stabroek
Belgium
Tel.: +32 3 660 13 20
info.be@m-h.biz

Germany
Mulder-Hardenberg GmbH
Nordring 13
D-65719 Hofheim/Ts
Tel.: +49 6192 - 97 91 85
info.de@m-h.biz